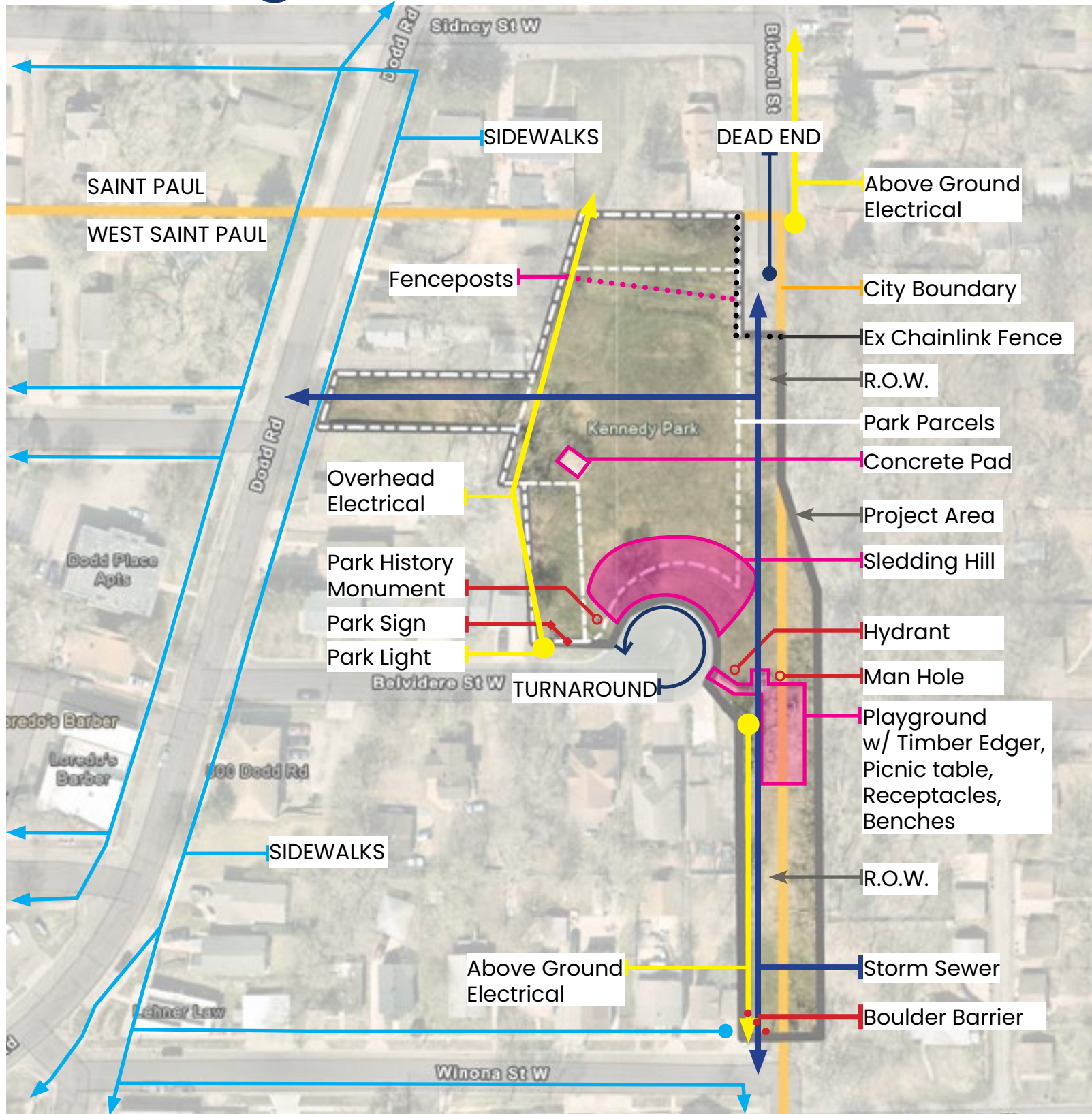




KENNEDY PARK SITE IMPROVEMENTS

ISSUES + OPPORTUNITIES

Existing Site Conditions + Inventory



Entrance with small picnic area



Concrete Pad from previous warming house

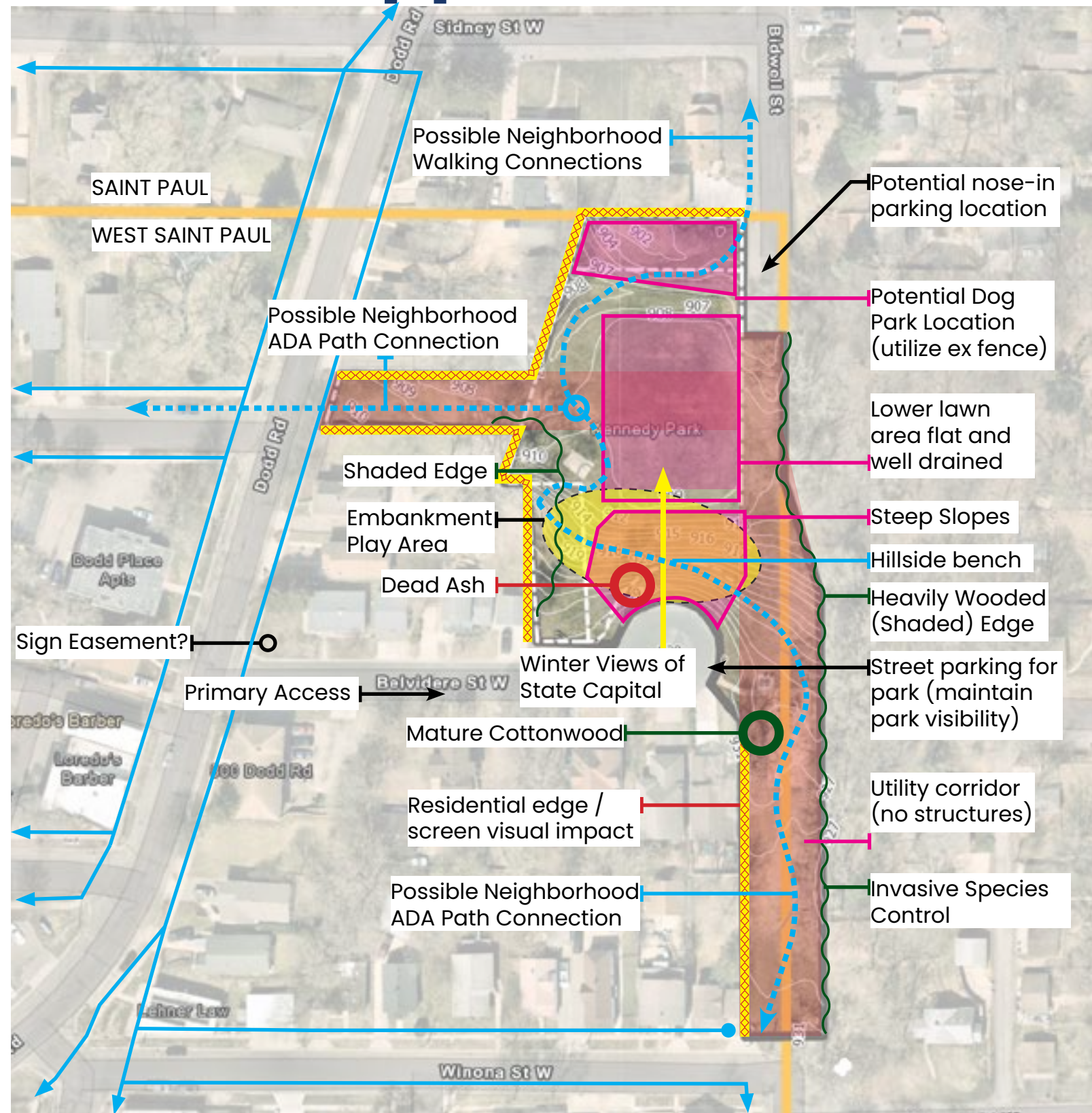


Fenceposts from acquired property, fence rails and fabric removed



Sledding Hill with a dead ash tree

Issues + Opportunities



Summary of Design Drivers

- Highlight the unique history of the Park and surrounding neighborhood
- Leverage it's natural features, resources, and views
- Enhance the Park's visibility and identity including place making and public art
- Create a comfortable and safe place to be gather and be outside
- Develop a dynamic, equitable, and exciting place to play
- Provide a venue with year round interest and use
- Implement improvements that are sustainable and maintainable
- Embrace and integrate 'WSP Weird' into the design
- Maintain flexibility to accommodate future park programming
- Connect to existing pedestrian system
- Provide accessible recreation options throughout the park
- Maintain access and buffers to existing underground utilities
- Integrate the park as a part of the wider park system approach
- Catalytic Project: Build excitement and support for the re-imagining and renovation of the City's park system
- Landscaping with an emphasis on biodiversity and resilience
- An all-ages park